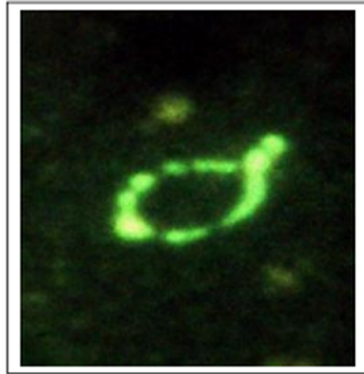


Test section:

3. What form is this?



Answer: This is a Ring form of *Borrelia burgdorferi* Stained with the *Borrelia* flagellin specific Monoclonal Antibody H9724.
Note the Ring forms in the Columns of Dr. Warthin's Table from 1930.

Also Not the "breakup" or "segmentation" in the Ring form above
Which is a step toward the formation of GRANULAR FORMS
Of *Borrelia* which contain DNA.

