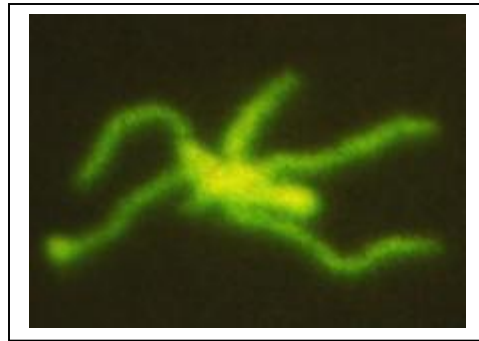


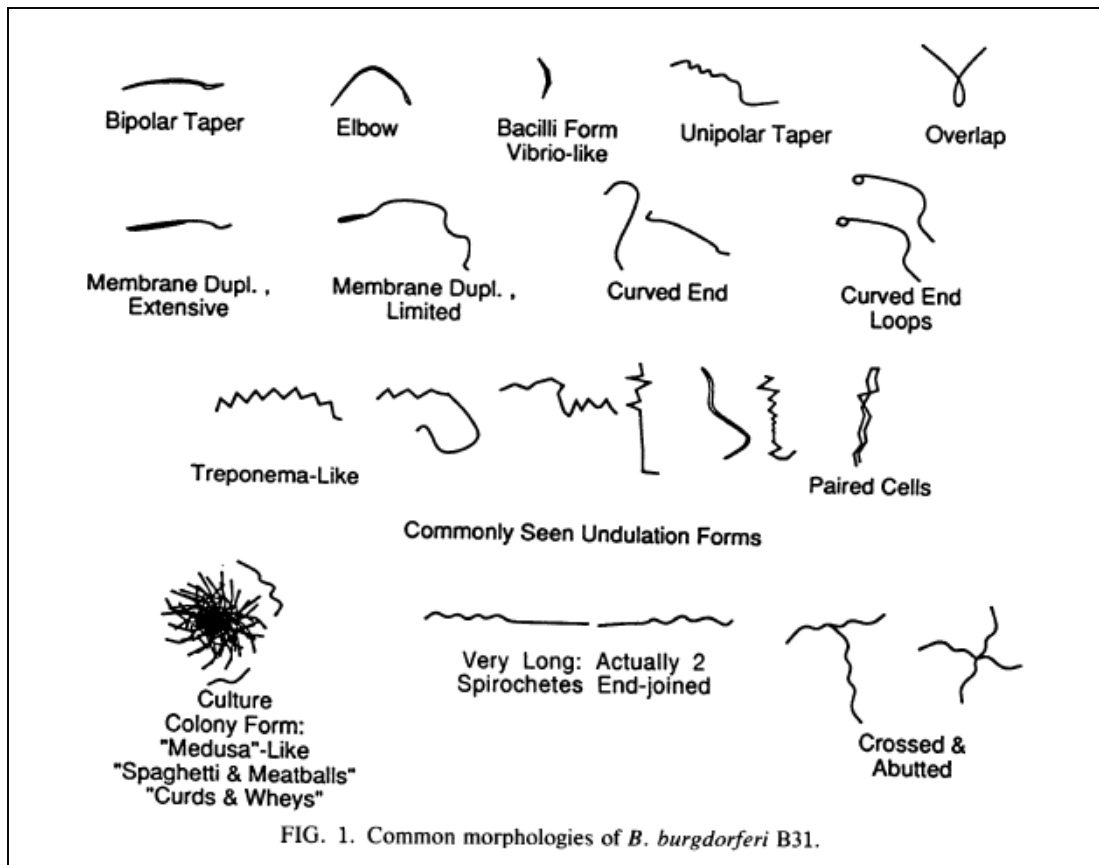
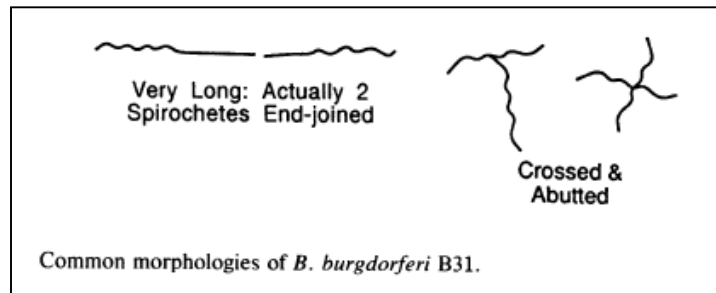
TEST Section:

Identify the forms below with Citations from the Medical Literature to prove that The Images are indeed Spirochetal:

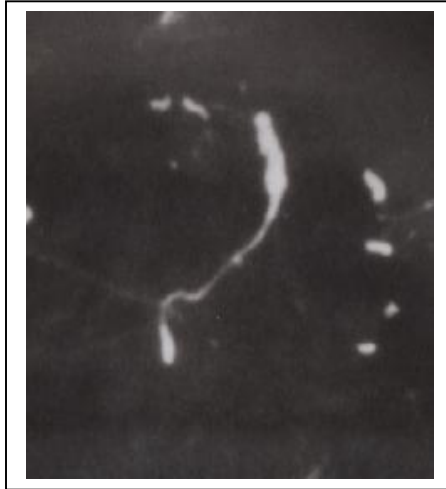
1. What form is this?



Answer: This spirochetal form is One of the variants illustrated by Drs Elisabeth Aberer and Paul Duray .

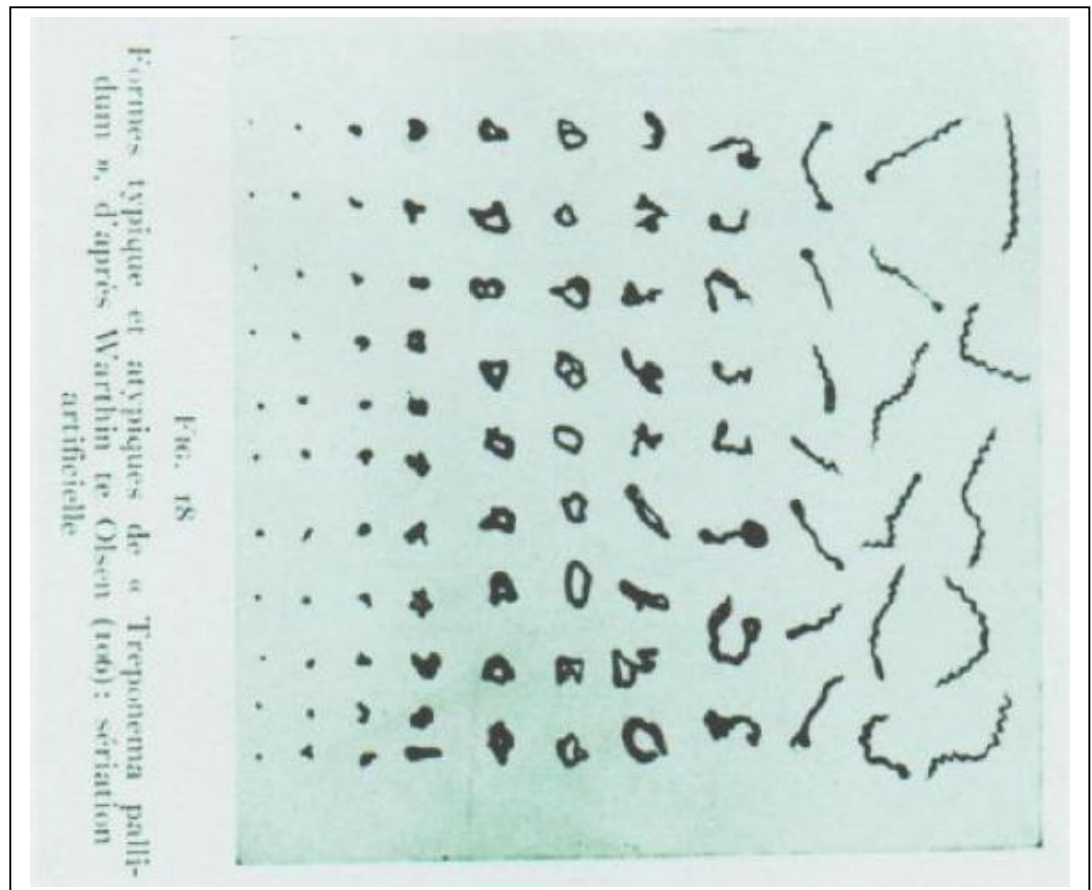


2. What form is this?



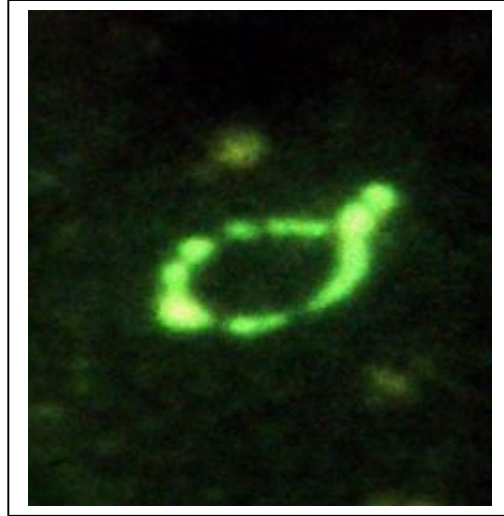
Answer: This *Borrelia burgdorferi* form corresponds to Spirochetes in the third and fourth columns from The right margin of Dr Warthin's table from 1930

And the Membrane Dupl. Extensive category in the Figure 1. of Drs Duray and Aberer



Test section:

3. What form is this?



**Answer: This is a Ring form of Borrelia burgdoferi Stained with the Borrelia flagellin specific Monoclonal Antibody H9724.  
Note the Ring forms in the Columns of Dr. Warthin's Table from 1930.**

**Also Not the “breakup” or “segmentation” in the Ring form above  
Which is a step toward the formation of GRANULAR FORMS  
Of Borrelia which contain DNA.**

